

Paint Can Carousel

The Vidir Paint Can Carousel is a semi-automated vertical carousel that rotates up and down to deliver 1 gallon cans of paint directly to the operator at an ergonomic height. The system utilizes overhead space to increase available storage capacity while reducing the shelf space required to stock paint improving the stores revenue per square foot. Inventory is easily and quickly accessible by a single person at the push of a button improving store efficiency and the ability to serve customers quickly. Best of all, it looks great on a retail floor.

For more information scan the code.



- Accommodates up to 1,148 cans of 1 gallon paint with standard models.
- Semi or Fully automated systems available.
- Utilizes overhead space for maximum storage density.
- Security keypad prevents unauthorized use.
- Improved productivity with more efficient SKU picking.
- Built-to-fit specifications.
- Improves stores revenue per square foot.
- 68 position paint specials display rack included.
- RAL colors available.

Safe Handling • Easy Access • Maximum Storage • Fast Retrieval • Small Footprint

Toll Free: 800.210.0141 www.storevertical.com

Paint Can Carousel



SP20 Specifications - Display Series

Locations are calculated for 1 Gallon Paint Cans (6-1/2" diameter x 7-3/4" Height)

Model	Height	Width	Depth	Carriers	Locations
SP20143-0734-10	11' 11"	11' 10"	3' 7"	7	404
SP20160-0834-10	13' 4"	11' 10"	3' 7"	8	452
SP20177-0934-10	14' 9"	11' 10"	3' 7"	9	500
SP20194-1034-10	16' 2"	11' 10"	3' 7"	10	548
SP20211-1134-10	17' 7"	11' 10"	3' 7"	11	596
SP20228-1234-10	19' 0"	11' 10"	3' 7"	12	644

SP30 Specifications - Storage Series

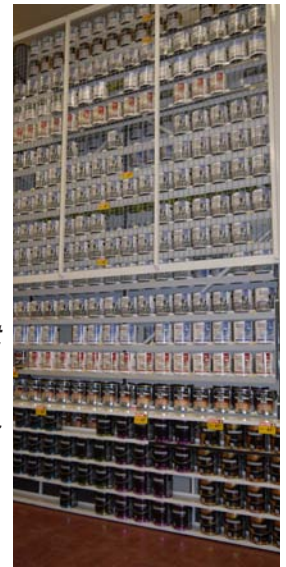
Locations are calculated for 1 Gallon Paint Cans (6-1/2" diameter x 7-3/4" Height)

Model	Height	Width	Depth	Carriers	Locations
SP30134-0638-09	11' 2"	11' 10"	5' 7"	6	608
SP30153-0738-09	12' 9"	11' 10"	5' 7"	7	698
SP30172-0838-09	14' 4"	11' 10"	5' 7"	8	788
SP30191-0938-09	15' 11"	11' 10"	5' 7"	9	878
SP30210-1038-09	17' 6"	11' 10"	5' 7"	10	968
SP30229-1138-09	19' 1"	11' 10"	5' 7"	11	1058
SP30248-1238-09	20' 8"	11' 10"	5' 7"	12	1148

What Our Customers Say

"I calculated the space that we are saving with this particular unit (Paint Can Carousel). It equals approximately 28 feet of shelf space, and when it comes to the retail business, that's huge. That's a large amount of space that we can use to highlight other products for our customers."

Diana Grushka
Home Hardware,
Arborg MB



"I'm really impressed with the Paint Can Carousel, and how much space we save. You can store a lot of cans in a very small area. The big thing I like about it is it displays paint so very well. Customers can see all the different products and they can see what we have in stock. It makes it look like we have lots and lots of paint in stock."

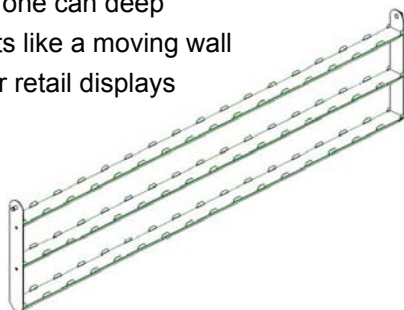
Milton Loewen
Home Hardware, Arborg MB

Carrier Configuration

Whether displaying paint for customers to see or storing extra paint in your warehouse, Vidir's Paint Can Carousel carrier options have you covered with 2 types of carriers available; SP20 from the Display Series and SP30 from the Storage Series. Each type of carrier can be loaded with up to 1,000 lbs per carrier to a total of 13,000 lbs overall carousel capacity.

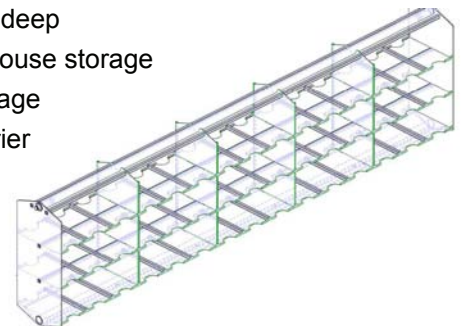
SP20 Single Carrier - Display Series

- 3 level, one can deep
- Presents like a moving wall
- Ideal for retail displays



SP30 Double Wide Carrier - Storage Series

- 3 level, 2 cans deep
- Ideal for warehouse storage
- 40% more storage than SP20 carrier



Safe Handling • Easy Access • Maximum Storage • Fast Retrieval • Small Footprint

Toll Free: 800.210.0141 www.storevertical.com